

EnVivo

Film/Slide Scanner



CONTENTS

1. SYSTEM REQUIREMENTS	4
2. PACK CONTENTS	4
3. NAME OF PARTS	5
4. HOW TO INSTALL SLIDES AND FILM INTO THE TRAY HOLDER.....	6
5. INSERT AND TAKE OUT SD CARD (OPTIONAL)	7
6. QUICK START	7
Power On/Off:	7
Select Function.....	7
Playback	9
Playback Menu	10
7. DOWNLOADING IMAGES TO YOUR COMPUTER	12
For Windows XP	12
For Windows 2000/Windows 7.....	12
For Windows VISTA	12
8. INSTALLING THE SOFTWARE.....	13
9. NOW YOU CAN START TO EDIT THE PICTURE AS YOU LIKE	15
- Main Menu.....	15
* File	15
* View	16
- Main Buttons.....	16
* Get Photos	16
* Edit	17
10. SPECIFICATIONS	23

1. SYSTEM REQUIREMENTS

- Personal computer, laptop, desktop or IBM compatible with Pentium 166 MHz minimum, and with an active USB (Universal Serial Bus) port.
- Windows 2000 / XP / Vista, Windows7, CD ROM drive, colour monitor, mouse and keyboard.

2. PACK CONTENTS

Make sure that all of the items shown below are included.

- Film Scanner
- USB cable
- CD-ROM for Arcsoft Software
- User manual
- TV cable
- Adapter
- Positive slide holder
- Negative film holder
- Cleaning brush

3. NAME OF PARTS



We strongly suggest using a clean, dry, non-alcohol cotton swab to insert into the film scanner slot and clean the glass surface periodically to produce a clear image.

Please make sure your film, slide and holder are clean before inserting into the scanner as well. Dust or dirt on the film, slide and holder will affect the quality of your scanned images.

4. HOW TO INSTALL SLIDES AND FILM INTO THE TRAY HOLDER

a. Open the film holder as illustrated



b. Put a film/slide in the film/slide slot as shown.

Note: Do not flip the film/slide. If flipped, the pictures will be scanned backwards.



c. Close the film/slide holder



5. INSERT AND TAKE OUT SD CARD (SD card not included in package)

- Insert SD card before scanning.
- Built in memory will be suspended when the SD card is in use.
- Please close and then open the cover after the card has been inserted.

Note: *This device does not support hot-plug. Inserting of SD card during operation will cause the device to power off.*

6. QUICK START

Connect to the AC power source to turn on the device.

Open the upper cover and you can see the power LED light will become red.

Insert the slide or film tray into the scanner and move the tray carefully to adjust the film.

Press the "Start" button to capture a picture.

Power On/Off:

- Power On: Open the upper cover and you can see the power LED light will become red.
- Power Off: Close the upper cover.

Select Function

- Press the "Function" button to enter function mode.
You can see the icon on the screen.
- Press the Left or Right buttons to select function.



Select Home

Press the "Start" button to get back to capture mode.





- Scanning Type

To enter the Film Type, you can use the Left or Right button to select, press the “Start” button to confirm.

Slide:



You need select the Slide mode when you scan a slide.

Monochrome:



You need select the Monochrome mode when you scan a BW film.

Film:



You need select the Film mode when you scan a colour film.



- Resolution

To enter the Resolution Function, you can use the Left or Right button to select, press the “Start” button to confirm.

1800 DPI --2592 x 1680 Pixels

3600 DPI – 5184 x 3360 Pixels



- Format

To enter the Format, select ‘do not format’ (X) or ‘format’ (✓). Press the “Start” button to confirm.

Caution: Formatted files cannot be recovered.



- **TV Output**

Connect the scanner to your TV with the TV cable.

NTSC: Setting the TV Output to NTSC.

PAL: Setting the TV Output to PAL.



- **Exposure value**

To enter the EV mode, press the Left or Right button to select, and press the “Start” button to confirm.

Exposure compensation helps you change the exposure setting manually to adjust object lighting. This feature helps to achieve better results when scanning a film or slide image with a strong backlight, or an image that is against a dark background.

- The settings can be adjusted in 1/2 steps within the range $-2EV \sim +2EV$.
- You can check the result of the compensation by viewing the image on the screen panel.



- **Mirror**

Press the Left or Right buttons to select the icon on the screen, and press the “Start” button to confirm. Press the “Start” button to capture the picture again.

Playback

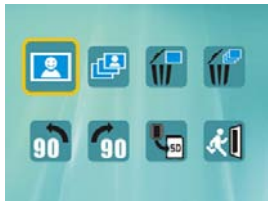
Press the “Playback” button to enter playback mode, and view the scanned photos. Press Left or Right button to select the next / previous photo.

Playback Menu


Press the "Start/Playback Menu" button to enter the menu mode.

You can see the icons on the screen.

Press the Left or Right buttons to select these items.



Single

- When you select the  icon, press the "Start" button to confirm. You need to press the "Left" or "Right" button to review the next / previous picture.




Slide Show

- Use the Slide Show feature to continue display your photos on the scanner screen panel. Once selected the Slide Show Mode, your camera will automatically show all the photos. Press any button to stop the slide show.




Delete One

- Select the  icon to delete current image.




- Delete All

Select the  icon to delete all the stored images from the internal memory or SD card. Files that are erased cannot be recovered. Make sure you select the image(s) you want to delete.



- Rotate 90° (Left)

Select the  icon, the current image will rotate 90° in counter clockwise direction.




- Rotate 90°(Right)

Select the  icon, the current image will rotate 90° in clockwise direction.




- Copy

Select the  icon, and press the "Start" button to confirm copying of all images into SD card from internal memory.



- Exit

Select the  icon, and press the "Start" button to confirm, then you will get back to the playback mode.

7. DOWNLOADING IMAGES TO YOUR COMPUTER

For Windows XP

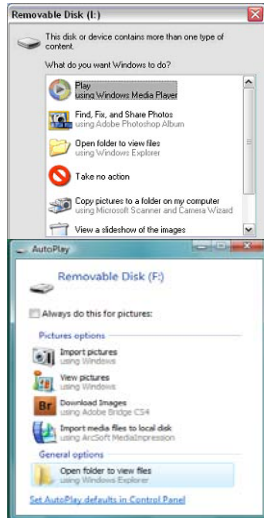
A dialogue box with options appears as shown to the right. The options are Play, Find/Fix/Share Photos. Open folders to View files/Take no action/Copy images to a folder on My computer/View a slide show of images, etc. Please select one of them and click on "OK".

For Windows 2000/Windows 7

Double click on "My computer", and then double click on Removable Disk (I:) in the DCIM files. (All the photos and videos are stored here).

For Windows VISTA

The AutoPlay dialog box with options will appear as shown on the right side. The options could be listed as the picture shown. You could select "Open folder to view files" to view the pictures.



8. INSTALLING THE SOFTWARE

• Installing the software

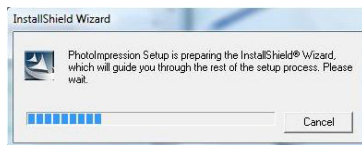
1. Insert the installation CD into the CD-ROM drive and the installation CD menu should appear.
2. When you see the following screen, choose "Arcsoft Software Suite" to install the software.

Windows 2000 / XP / Vista/Windows7 directions:

1. Select the language you wish to be displayed. Then click OK.



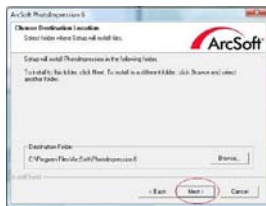
2. Photolmpression will start the installation.



3. Click on Yes to agree to the terms and conditions.



4. Click Next to have Photolmpression download into your Programs folder.

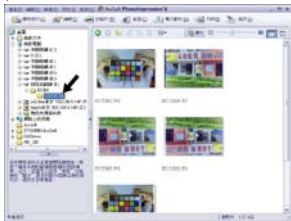


5. Click Next to continue.

6. Photolmpressions will start the setup process.

9. NOW YOU CAN START TO EDIT THE PICTURE AS YOU LIKE

First, click on the “**PhotoImpression 6**” icon on the desktop. Follow the instructions to open the software, and click on the picture to select, then use the Arcsoft tools to edit the pictures.



- Main Menu

The Main Menu appears in the upper left corner of the workspace. Many of the program's key options and controls are available in the Main Menu. To learn more about a particular menu item and the options and controls it contains, choose from the list below:

* File

Scan for Media Files

Launches the Scan for Media Files dialog box that enables you to scan your computer for all photos, music and video files. This process creates a media library that helps the program perform as fast as possible. You can scan your computer in one of the following three ways:

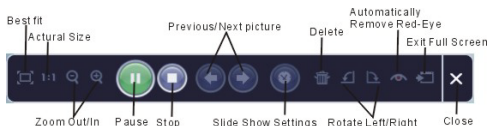
- **Scan Primary Folders Only** - Scans folders most commonly used for storing media, such as My Documents, My Pictures and Desktop.
- **Scan All Folders** - Scans your entire computer for media (except Windows and Program Files folders).

- **Select the folders you want to scan** - Let's you choose the folders for scanning.

* View

Full Screen/Play (F4)

Plays or displays the first selected file in full screen view.



- Main Buttons

* Get Photos

Acquire from Scanner

Here you can:

- Acquire images from connected TWAIN compliant devices such as scanners and some digital cameras.
- Assign names to image files as they are acquired (using today's date or a descriptive word).

How to acquire images from a TWAIN compliant device:

1. Select a scanner or other TWAIN device from the drop down list.
2. Choose the file format you want to use for the acquired images (JPG).
3. If you've selected JPG as the file format, select the image quality for the acquired images (Highest, High, Normal, Low). The lower the quality selected, the higher the level of compression applied.
4. Choose a destination folder for the photos by clicking "Browse" (folder icon) and navigating to the folder.
5. Choose a naming method (today's date or description). Enter a description if

applicable.

6. Click "Acquire".

* Edit

Photo Editing Tools

The Photo Editing Tools module includes a complete set of photo enhancement, editing and retouching controls.

The window can be stretched to provide a large size view of the active photo. Double click the module's tool bar to maximize the window to fill the computer screen.

In addition to the large photo workspace, the Photo Editing Tools module includes five distinct sets of controls:

Enhance

The Enhance function includes two types of controls:



Auto Enhance

Click the "Auto Enhance" button to improve the overall quality of your pictures with a single click.

Manual Fix

For precise image enhancement control, adjust the Brightness, Contrast and Sharpen sliders.

How to enhance a photo manually:

1. Move the sliders to adjust the level of Brightness and Contrast and to make the image more sharp.
2. Use the zoom slider to get a closer look at how the adjustment affects the photo.
3. Click "Apply" if you like the result. Click "Cancel" if you do not.

Colour

This feature is designed to fix digital photos that have unnatural colours or appear too dark. It's also great for fixing scanned versions of old prints that have faded or whose colours have changed after many years of neglect.

How to fix the colour of a photo:

1. Drag the colour balance sliders to make the photo colour appear more natural. Add red or yellow to make the photo warmer. Add blue or green to make the photo cooler.
2. Drag the Lighter/Darker slider to the left to reveal details hidden in a dark photo or to the right to make a faded photo look new again.
3. Click "Apply" if you like the result. Click "Cancel" if you do not.

Red-Eye

This feature makes it easy for you to fix all red-eye - a common problem in flash photography.

There are two ways to fix red-eye:



Auto Fix

1. Simply click the "Fix Red-Eye" button to automatically find and fix all red-eye.
2. If not all of the red-eye are fixed, used the "Click to Fix" method.

Manual Fix

1. Use the zoom slider on the toolbar to zoom in on the photo.
2. Drag the small white box inside the zoom navigator to move over a red-eye.
3. Place your cursor directly over the red-eye and click.
4. Repeat the process until all red-eyes are fixed.
5. Click "Undo" if you make a mistake or don't like the result.

Crop

This feature enables you to trim photos for dramatic effect or cut off the ugly/distracting parts of a picture.

How to use crop:

1. Choose the crop orientation (portrait or landscape).
2. Select a fixed proportion for the crop rectangle (4:6, 5:7, 8:10) or choose "Custom" if you want to use another proportion.
3. Resize the crop rectangle by clicking and dragging the red lines.
4. Move the crop rectangle into position by clicking and dragging inside the red box.
5. Click "Crop". The area inside the rectangle will be kept, the area outside will be trimmed away.
6. Click "Undo" if you make a mistake or don't like the result.

Straighten

This feature enables you to fix photos that appear to be tilted.

How to use Straighten:

1. Move the slider (or click the rotate buttons) until the photo appears straight.
2. Use the superimposed grid lines for vertical and horizontal reference.
3. Click "Apply" if you like the result. Click "Cancel" if you do not.

Blur Background

This feature can be used in a subtle way - to tone down un-important background details, or for dramatic effect - by making the main subject of a photo pop out of the picture.

How to use Blur Background:

1. With your cursor, trace a line around the person or object you want to stand out. When you release the mouse button, the area outside the traced line will become slightly blurred.
2. Drag the first slider to make the transition between the blurred and non-blurred area sharp or smooth.

3. Drag the second slider to increase or decrease the amount of blur.
4. Click "Apply" if you like the result. Click "Cancel" if you do not.

Saving Your Results

When you're done editing a photo, click Save As to save your results. You can choose to overwrite the original file or save a new one.

Click "Close" to exit the Photo Editing module.

Retouch



Healing Brush

The Healing Brush is good for fixing dust, scratches and removing skin blemishes.

How to use the Healing Brush to fix a skin blemish:

1. Establish a source point for the Healing Brush by holding the Shift key and clicking on an area of the skin that is close in colour and texture to the area you want to heal.
2. Use the zoom control to zoom in on the blemish.
3. Adjust the size of the healing brush so the cursor (circle) is only slightly larger than the blemish.
4. Paint over the blemish. The area will be healed.

Click "Undo" if you make a mistake or don't like the result.



Clone

The Clone tool is good for removing unwanted elements from a photo. It can also be used for fun effect, like moving a nose from one person to another.

How to use the Clone tool to remove a telephone pole from the background of a photo:

1. Establish a source point for the Clone tool by holding the Shift key and clicking on an area of the sky that you want to use to paint over the telephone pole.

2. Adjust the brush size so the cursor (circle) is only slightly larger than the widest part of the telephone pole.
3. Click and hold your mouse button and carefully paint over the telephone pole. Do not release the mouse button until the job is done. The sky will be cloned into place.

Click "Undo" if you make a mistake or don't like the result.



Lighten/Darken

The Lighten/Darken tool is good for adjusting specific areas of a photo.



Smudge

Simulate the smearing of wet paint. Please click and drag the below to change the brush size and hardness.



Sharpen

Sharpen blurry areas. Please click and drag the sliders to change the brush size and transparency.



Blur

Smooth out rough areas. Please click and drag the sliders to change the brush size and intensity.



Paint Brush

Let you "paint" on your image when you click and drag the mouse. Please click and drag the sliders to change the brush size and transparency.



Line

Draw a straight line in the photo. Please click and drag the sliders to change the line width and transparency.



Eraser

Simulate an eraser, removing the image painting by paintbrush and line tools from your photo. Please click and drag the sliders to change the eraser size and effect.

Saving Your Results

When you're done, click "Save As" button to save your results. You can overwrite the original file or save it as a new one. Or click "Cancel" to exit without saving.

Click "Close" to exit the Photo Editing Module.

Note: For more detailed information, please refer to the [Help] of the program.

10. SPECIFICATIONS

Interface:	USB 1.1
Image Sensor:	5 mega CMOS sensor
Lens:	F no.= 6.0, 3 glass elements , Half-field Angle=15°
Panel	2.4" TFT
Focus Range:	Fixed focus
Exposure Control:	Automatic / Manual (-2.0 EV~ +2.0EV)
Colour Balance:	Automatic
Scan high resolution	2592x1680
Data Conversion	10 bits per colour channel
Film type	35mm Film , Monochrome , Slide
Scan Method	Single pass
Light Source	Back light (3 white LED)
Button	Left, Right ,Start
TV OUT	YES (NTSC / PAL)
Storage	Built-in 32 MB Nand Flash + SD card Slot
Power:	DC 5V (Adapter included)
USB mode	Mass storage
Dimensions	96.4mm(H) X 94mm(W) X 170mm(L)
Weight	500 g
Software	Arcsoft Photo Impression 6
Language	English, French, German, Italian, Spanish, T.C,S.C, Japanese Portuguese
Operation Systems	Windows 2000 / XP / Vista/Windows7

11. ELIMINACIÓN



Los equipos eléctricos y electrónicos (EEE) contienen materiales, partes y sustancias que pueden ser peligrosas para el medio ambiente y dañinas para la salud humana si no son desechados correctamente.

Los equipos que están marcados con el logotipo WEEE (como se muestra a la izquierda) no deben ser tirados junto con la basura doméstica. Contacte con el departamento local de gestión de residuos ya que ellos le podrán dar detalles de las opciones de reciclaje disponibles en su zona.